

# Our Core Line



uinta design



# Overview

At Uinta Design, our Core line brings you the best of both worlds: Our top-performing silhouettes, fully customizable to your client’s brand vision. Designed to inspire and built to flex, these styles are the perfect starting point to create something truly one-of-a-kind.



WHY CORE?	4
OUR PROCESS	5
LOOKBOOK	
<b>BACKPACKS</b>	6
<b>CROSSBODIES</b>	19
<b>DUFFELS</b>	28
<b>TOTES</b>	37
<b>TRAVEL</b>	42
<b>ACCESSORIES</b>	51
UINTA DESIGN STUDIO	54
OUR MATERIALS	56
ABOUT US	58

# Contents



# WHY CORE?

The Core line was designed to make custom more accessible—both in cost and impact. By starting with our best-selling, quick-turn silhouettes, we help you hit price points without sacrificing quality. And with sustainable material options and streamlined sampling, Core delivers custom that’s smarter for your client and the planet.



# OUR PROCESS

MOQ: 250 units

### TIMELINES

Mockups: 3-5 days

Sample Production: 14-30 days

Production: 45 days

Boat Frieight Shipping: 45 days

Air Frieight: 5-10 days



MOCKUP

REAL PRODUCT

## GET IN TOUCH WITH US

Fill out our [virtual request form](#), or email your sales representative with logo, brand guidelines, and silhouette favorites.

## VIRTUALS & SAMPLING

Recieve your personalized mockups via your assigned sales representative, then choose your favorites to sample!

## PRODUCTION & SHIPPING

The hard part is over! We work behind the scenes to get your chosen products produced and shipped to your desired location.

**Our team will be with you every step of the way.**





# 10L Daypack

The 10L Daypack is a great option for those looking for a cost effective bag that is guaranteed to be used by clients, especially those with an active lifestyle. This backpack is perfect for short hikes, walks, and any daily adventure.



**Customize to Your Brand**



## FEATURES

8.5"L x 15.5"H x 6"D  
Padded Straps  
Front Zipper Pocket  
Adjustable Straps  
Compact & Cost Effective

## PERFECT FOR

Day hikes  
Gym equipment  
Daily errands  
Event marketing  
Unisex gifting

## MATERIALS

600D  
Vinylon

*View material details on page 58  
or on [uintadesign.com/materials](http://uintadesign.com/materials)*



# Sprint Cinch Pro

This backpack is made for those who are always on the move. This lightweight and compact bag is perfect for storing your workout gear or everyday items. The draw-string closure allows for quick and easy access, while the adjustable shoulder straps ensure a comfortable fit.



Customize to Your Brand



## FEATURES

10"L x 18.5"H x 5"D  
Front Zipper Pocket  
Mesh Straps  
Interior Zipper Pocket  
Cinch Top Closure

## PERFECT FOR

Gym trips  
Day hikes and excursions  
Lightweight clothing and gear  
Event gifting, especially races!  
Employee appreciation

## MATERIALS

600D  
Vinylon

View material details on page 58  
or on [uintadesign.com/materials](http://uintadesign.com/materials)



# Standard Backpack

The Standard Backpack is a great option for those who just need the basics. It features a front zipper pocket for easily accessible items, an interior laptop pocket, side pockets, and a padded back panel for comfort. Never underestimate the power of simplicity!



Customize to Your Brand



## FEATURES

12"L x 17.75"H x 5"D  
Front Zip Pocket  
Interior Laptop Sleeve  
Padded Back Panel  
Padded Straps

## PERFECT FOR

Work and school  
Event giveaways  
Employee appreciation  
Cost effective solutions  
Just the basics

## MATERIALS

600D  
rPET  
Cotton Canvas  
*View material details on page 58  
or on [uintadesign.com/materials](http://uintadesign.com/materials)*

# Explore Cooler Backpack

This backpack is perfect for days at the beach, on the trail, or as your game-day companion. Keeps drinks and snacks cool until you're ready to enjoy, meanwhile, carry to your preference with padded backpack straps, or connecting webbing handles.



Customize to Your Brand



## FEATURES

11"L x 17"H x 7"D  
Padded Straps  
Top Carrying Handle  
Interior Zip Pocket  
Insulated Interior

## PERFECT FOR

Beverage and food industries  
Family gatherings  
Employee appreciation  
Outdoor excursions  
Unique retail addition

## MATERIALS

Coated & regular 600D  
rPET  
Cotton Canvas  
*View material details on page 58  
or on [uintadesign.com/materials](http://uintadesign.com/materials)*



# Adventure Daypack

The Adventure Daypack is the perfect companion for day hikes, mountain biking, camping, and travel. This daypack is lightweight, durable and has breathable padded mesh for extra comfort. The cinch top opening is easy to use and features a cinch cover for added protection.



**Customize to Your Brand**



## FEATURES

9"L x 18"H x 5.25"D  
Shoulder Straps  
Adjustable Sternum Strap  
Exit Slit for Hydration Hose  
Hydration Bladder Sleeve

## PERFECT FOR

Day hikes  
Event gifting and promotion  
Employee appreciation  
Outdoor industries  
Gym trips

## MATERIALS

Ripstop  
Recycled Ripstop  
Twill  
*View material details on page 58  
or on [uintadesign.com/materials](http://uintadesign.com/materials)*



# Daybreak Backpack

This backpack is the perfect elevated basic. You'll want to take it everywhere because of its functionality and stylish exterior! This comes with an interior water bottle pocket, a handy grab handle, a key leash, interior organization, a laptop pocket, and a luggage sleeve for travel.



**Customize to Your Brand**



## FEATURES

9"L x 14.5"H x 7.5"D  
 Front Zip Pocket  
 Key Leash  
 Luggage Sleeve  
 Interior Pockets

## PERFECT FOR

Work and school  
 Employee appreciation  
 Daily commute and travel  
 Tech industries  
 Unisex solutions

## MATERIALS

Cotton Canvas  
 Vinylon

*View material details on page 58  
 or on [uintadesign.com/materials](http://uintadesign.com/materials)*



# Vortex Backpack

This backpack is made for outdoors fans, as it makes the perfect daypack. The Vortex Backpack has a unique front zipper opening, webbing straps to secure everything down, and a luggage sleeve if you're traveling to your outdoor destination. Bon voyage!



**Customize to Your Brand**



## FEATURES

12"L x 20"H x 5.5"D  
Top Zipper Pocket  
Mesh Water Bottle Pockets  
Luggage Sleeve  
Padded Back & Straps

## PERFECT FOR

Daily commutes  
Employee appreciation  
Client gifting  
Work and school  
Adding to your online store

## MATERIALS

Vinylon  
Coated 600D  
rPET  
*View material details on page 58  
or on [uintadesign.com/materials](http://uintadesign.com/materials)*



# Travel Backpack

This elevated backpack is the superior option when traveling light, or when you just need a little more room than your carry-on can handle. Pack it to perfection with compacting side buckles, a duffel style opening, and multiple organization pockets, and then travel stress free with a convenient luggage sleeve, or 2 handle options.



Customize to Your Brand



## FEATURES

11.5"L x 16"H x 7.75"D  
Laptop Sleeve  
Luggage Sleeve  
Carry-On Size  
Duffel Style Opening

## PERFECT FOR

Travel  
Daily commutes  
Weekend trips  
Overnight stays  
Adding to your online store

## MATERIALS

Twill  
Vinylon  
rPET  
*View material details on page 58  
or on [uintadesign.com/materials](http://uintadesign.com/materials)*

# Daytime Sling

This little sling is a great unisex silhouette for everyday adventures from the gym to your evening commute. Stay organized with multiple organization pockets, including a unique strap pocket for your valuables.



Customize to Your Brand



## FEATURES

8.7"L x 14"H x 5"D  
Crossbody Strap  
Cell Phone Sleeve  
Interior Mesh Organization  
Strap Pocket

## PERFECT FOR

Employee appreciation  
Travel  
Urban adventures  
Adding to your online store  
Everyday errands

## MATERIALS

Ripstop  
Recycled Ripstop  
Twill  
*View material details on page 58  
or on [uintadesign.com/materials](http://uintadesign.com/materials)*



# Mountain Hip Pack

The Mountain Hip Pack is a great option for outdoors lovers. Keep hands free with an adjustable waist strap, so you can fully embrace your adventure.



**Customize to Your Brand**



## FEATURES

12"L x 6"H x 3"D  
Front Zip Pocket  
Main Zipper Opening  
Interior Zip Pocket  
Adjustable Strap

## PERFECT FOR

Day hikes  
Daily errands  
Gym trips  
Essentials and a bit extra  
Event marketing and gifting

## MATERIALS

Twill  
Ripstop  
rPET  
*View material details on page 58  
or on [uintadesign.com/materials](http://uintadesign.com/materials)*





# Travel Belt Bag

Stay stylish and hands-free with our Everyday Belt Bag. This versatile accessory is perfect for carrying your essentials on the go. Whether you're running errands or exploring the city, this bag is the perfect companion for your everyday adventures.



**Customize to Your Brand**



## FEATURES

7"L x 5.5"H x 2"D  
2 Interior Stretch Mesh Pockets  
Interior Zip Pocket  
Zipper Opening  
Adjustable Strap

## PERFECT FOR

Tradeshows and conferences  
Giveaways  
Client and employee gifting  
Daily errands  
Event marketing and gifting

## MATERIALS

Silk Nylon  
Twill  
rPET  
*View material details on page 58  
or on [uintadesign.com/materials](http://uintadesign.com/materials)*



# Modular Sling

Stay organized and versatile with our Modular Sling Bag. Designed for the modern traveler or urban explorer, the adjustable strap ensures a comfortable fit. Carry your essentials while keeping your hands free.



**Customize to Your Brand**



## FEATURES

5"L x 8.3"H x 2"D  
Detachable Headphone Pouch  
Carrying Handle  
Front Zip Pocket  
Adjustable Strap

## PERFECT FOR

Daily errands  
Employee merch stores  
Unisex crossbody solutions  
Organizing essentials  
Urban adventures

## MATERIALS

Silk Nylon  
Twill  
rPET  
*View material details on page 58  
or on [uintadesign.com/materials](http://uintadesign.com/materials)*





# Event Sling

Compliment your active lifestyle with our Event Sling, a versatile crossbody bag that features an extra pouch on the strap, providing quick access to essentials like keys, cards, or cash without disrupting your day.



**Customize to Your Brand**



## FEATURES

7.5"L x 12.75"H x 3"D  
Padded Adjustable Strap  
Key Clip  
Phone Pocket  
Interior Organization

## PERFECT FOR

Daily errands  
Employee merch stores  
Event marketing & gifting  
Adding to your online store  
Travel

## MATERIALS

Silk Nylon  
Coated 150D  
rPET  
*View material details on page 58  
or on [uintadesign.com/materials](http://uintadesign.com/materials)*



# Overnight Duffel

The Overnight Duffel is the perfect carry-on. Keep organized with interior pockets, and hands-free with the built in luggage sleeve. Bring it along for multi-night stays, gym trips, busy work days, and more.



**Customize to Your Brand**



## FEATURES

18"L x 15"H x 6.25"D  
Luggage Sleeve  
Detachable Crossbody Strap  
Interior Organization Pockets  
Front Zip Pocket

## PERFECT FOR

Travel  
Overnight stays  
Weekend trips  
Hospitality & airline industries  
Employee gifting

## MATERIALS

Silk Nylon  
Coated 150D  
rPET or Cotton Canvas  
*View material details on page 58  
or on [uintadesign.com/materials](http://uintadesign.com/materials)*



# Basic Barrel Duffel

The Barrel Duffel is designed for ultimate convenience and versatility, featuring durable carrying straps and a removable shoulder strap for easy transport. Its spacious main compartment provides ample room for all your essentials, making it perfect for travel, gym, or everyday.



**Customize to Your Brand**



## FEATURES

27"L x 9"H x 9"D  
Carrying Straps  
Detachable Shoulder Strap  
Large Main Zip Opening  
Cost Effective

## PERFECT FOR

Gym trips  
Work equipment  
Travel  
Overnight stays  
Event gifting & marketing

## MATERIALS

600D  
Vinylon  
rPET  
*View material details on page 58  
or on [uintadesign.com/materials](http://uintadesign.com/materials)*



# Austin Duffel

This bag is built to last and look good with a durable, soft-hand feel material. Take the Austin Duffel anywhere with you, reassured that it is carry-on compatible with plenty of organization.



**Customize to Your Brand**



## FEATURES

18"L x 12"H x 6"D  
Laptop Sleeve  
Luggage Sleeve  
Expandable Side Pockets  
Interior Pockets

## PERFECT FOR

Overnight stays  
Gym goers  
Work and leisure trips  
Employee and client gifting  
Adding to your online store

## MATERIALS

Silk Nylon  
Coated 150D  
rPET or Cotton Canvas  
*View material details on page 58  
or on [uintadesign.com/materials](http://uintadesign.com/materials)*



# Everyday Duffel

The Everyday Duffel is the perfect companion for all your activities, offering a side zipper pocket, mesh bottle pocket, and a dedicated shoe pocket to keep your gear organized. With a removable shoulder strap, interior zip pocket, and front zip pocket, this duffel combines versatility and convenience for any adventure.



**Customize to Your Brand**



## FEATURES

17"L x 9"H x 9"D  
 Front Exterior Pocket  
 Stretch Mesh Bottle Pocket  
 Luggage Sleeve  
 Shoe Pocket

## PERFECT FOR

Gym trips and equipment  
 Overnight stays  
 Weekend trips  
 Sports and active industries  
 Travel

## MATERIALS

Vinylon  
 Coated & regular 600D  
 rPET  
*View material details on page 58  
 or on [uintadesign.com/materials](http://uintadesign.com/materials)*



# Neoprene Carryall Duffel

The Mini Neoprene Carry All Bag is a versatile companion for your daily routine. Compact yet spacious, it's perfect for carrying essentials during your commute, keeping small gym accessories organized, or serving as a handy sidekick for any outing.



Customize to Your Brand



## FEATURES

14.5"L x 9"H x 7.5"D  
Detachable Shoulder Strap  
Luggage Sleeve  
Laptop Sleeve  
Fold Down Expandable Sides

## PERFECT FOR

Overnight stays  
Employee appreciation  
Adding to your online store  
Event kits & marketing  
Wanting mini solutions

## MATERIALS

Neoprene  
Coated 150D  
Cotton Canvas  
*View material details on page 58  
or on [uintadesign.com/materials](http://uintadesign.com/materials)*

# Basic Tote

Who doesn't love a good tote? This everyday essential is sure to be used by all who receive it, and your brand will be center stage. This tote is perfect solution for events, giveaways, gifting, and so much more.



Customize to Your Brand



## FEATURES

13.5"L x 14.5"H x 5.5"D  
Webbing Tote Handles  
Front Drop Pocket  
Washable Cotton  
Spacious Interior

## PERFECT FOR

Event giveaways  
Grocery trips & errands  
Employee & client gifting  
Cost effective solutions  
Entertainment industries

## MATERIALS

Cotton Canvas  
*View material details on page 58  
or on [uintadesign.com/materials](http://uintadesign.com/materials)*



# Large Mesh Beach Tote

Farmer's markets to the sandy destinations, the Mesh Beach Tote carries the essentials. This unstructured mesh bag is a low-budget win for sunny days.



**Customize to Your Brand**



## FEATURES

17"L x 13.5"H x 6.25"D  
Tote Straps  
Breathable Mesh  
Snap Top Webbing Closure  
Interior Zipper Pocket

## PERFECT FOR

Travel  
Beach trips  
Resort stores & gifting  
Hospitality industries  
Beverage & food industries

## MATERIALS

PVC Mesh  
Cotton Canvas

*View material details on page 58  
or on [uintadesign.com/materials](https://uintadesign.com/materials)*



# On-The-Go Tote

Events, thank-you's, and corporate events never looked so good. This tote holds all the essentials "without the all the fluff".



Customize to Your Brand



## FEATURES

12.5"L x 15.5"H x 5"D  
Tote Handles  
Fits a Laptop  
Washable Materials  
Spacious Interior

## PERFECT FOR

Event gifting & marketing  
Grocery store visits  
Everyday essentials  
Overnight stays  
Client & employee gifting

## MATERIALS

Cotton Canvas  
Vinylon

View material details on page 58  
or on [uintadesign.com/materials](http://uintadesign.com/materials)

# TYVEK Tote & Pouch

The TYVEK Tote is a crowd favorite for lightweight, packable silhouettes. Pouch included, this duo is perfect for on the go, carry-on, or beach day essentials.



Customize to Your Brand



## FEATURES

14.5"L x 14.5"H x 5.5"D  
Front Zipper Pocket  
Tote Handles  
Interior Organization Pockets  
Matching Pouch

## PERFECT FOR

Travel & vacation  
Resort gift shop  
Client & employee gifting  
Adding to your online store  
Overnight stays

## MATERIALS

TYVEK  
Cotton Canvas

View material details on page 58  
or on [uintadesign.com/materials](http://uintadesign.com/materials)



# Unisex Toiletry Pouch

A compact and convenient option for overnight stays, the Unisex Toiletry kit offers ample storage and organization, and endless options for customization. This unique silhouette features an interior zip pocket, an exterior zip pocket, and a webbing side handle.



**Customize to Your Brand**



## FEATURES

8.5"L x 5"H x 3.25"D  
Interior Zip Pocket  
Webbing Side Handle  
Front Exterior Zip Pocket  
Washable Materials

## PERFECT FOR

Travel  
Overnight stays  
Beauty industries  
Airline industries  
Client & employee gifting

## MATERIALS

Silk Nylon  
Cotton Canvas

*View material details on page 58  
or on [uintadesign.com/materials](http://uintadesign.com/materials)*



# Laptop Sleeve

The Laptop Sleeve is a great option for minimalists, commuters, and traveling. This simple sleeve comes with sturdy handles that allow for easy carrying and handling.



Customize to Your Brand



## FEATURES

11"L x 15.75"H x 1"D  
Carrying Handles  
Padded Exterior  
Top Zipper Opening  
Fits a 15" Screen

## PERFECT FOR

Client & employee gifting  
Tech industries  
Adding to your online store  
Event gifting & marketing  
Everyday commute

## MATERIALS

Twill  
Neoprene  
Recycled Twill  
*View material details on page 58  
or on [uintadesign.com/materials](http://uintadesign.com/materials)*

# Double Pouch Wristlet

This wallet wristlet might be small, but it will be a popular offering! Customize with your brand colors and logos to create something that will be used everyday as a stand-out essential.



Customize to Your Brand



## FEATURES

4.5"L x 2.8"H x 0.2"D  
Wrist Band  
Clip On-and-Off Wallets  
Dual Pouches  
Splash Resistant Exterior

## PERFECT FOR

Client & employee gifting  
Travel  
Daily errands  
Event gifting & marketing  
Active lifestyles

## MATERIALS

Twill  
Vinylon  
Recycled Twill  
*View material details on page 58  
or on [uintadesign.com/materials](http://uintadesign.com/materials)*



# Cable Organizer

Keep your tech gear tangle free and in one place with the Cable Organizer. Perfect for work or traveling, customizable organization with multiple pockets and elastic bands.



**Customize to Your Brand**



## FEATURES

8"L x 5"H x 2"D  
 Mesh Zip Pocket  
 Elastic Organizers  
 Front Zipper Pocket  
 Interior Hidden Zip Pocket

## PERFECT FOR

Tech industries  
 Employee & client gifting  
 Adding to your online store  
 Event marketing & gifting  
 Travel

## MATERIALS

Coated 600D  
 Vinyon  
 rPET  
*View material details on page 58  
 or on [uintadesign.com/materials](http://uintadesign.com/materials)*



# Hanging Toiletry Bag

This expandable toiletry bag has four main compartments with one removable section, one dual-zipper compartment, and sewn-in elastics to hold your items in place. The dual-zipper feature lets you access a full compartment from two ends. It's easy to pack, quick to organize, and simple to use.



**Customize to Your Brand**



## FEATURES

11"L x 8"H x 4.5"D  
Carrying Handles  
Detachable TPU Zipper Pouch  
Elastic Organizers  
360 Degree Swivel Hook

## PERFECT FOR

Overnight stays  
Travel  
Beauty industries  
Airline industries  
Client & employee gifting

## MATERIALS

Vinylon  
Silk Nylon  
rPET  
*View material details on page 58  
or on [uintadesign.com/materials](http://uintadesign.com/materials)*



# 4pc Packing Cube Set

Save space and stay organized with the perfect travel companion, our Packing Cube Set. These make a thoughtful and useful gift for employees, clients, or share the love and add them to your online offerings.



Customize to Your Brand



**FEATURES**

Large: 12.2”L x 9.8”H x 3.15”D  
Medium: 10”L x 7.5”H x 3.15”D  
2 Medium Cubes  
2 Large Cubes  
Fit a Standard Carry-On

**PERFECT FOR**

Adding to your online store  
Employee appreciation  
Airline industries  
Travel  
Corporate gifting solutions

**MATERIALS**

Ripstop  
Twill  
  
View material details on page 58  
or on [uintadesign.com/materials](http://uintadesign.com/materials)

# Structured 5 Panel Snapback

The Structured 5 Panel Snapback features a modern brim and adjustable fit. This fun accessory combines both style and comfort for something that clients or employees are sure to use in their daily adventures, all while showing off your brand!



Customize to Your Brand



**FEATURES**

One Size Fits Most  
Rope Detail on Bill  
Adjustable Snap Back  
Customizable Interior Tape  
Washable Fabrics

**PERFECT FOR**

Adding to your online store  
Employee appreciation  
Sport & active industries  
Outdoor adventures  
Corporate gifting solutions

**MATERIALS**

Cotton  
Nylon  
  
View material details on page 58  
or on [uintadesign.com/materials](http://uintadesign.com/materials)



# Rope Hat

The Rope Hat is a fun twist on a classic with a customizable rope accent, breathable prefforated sides, and a light-weight feel, making it the perfect accessory for clients and employees who are fashion forward and active.



**Customize to Your Brand**



## FEATURES

One Size Fits Most  
Rope Detail on Bill  
Breathable Airated Sides  
Adjustable Snap Back  
Washable Fabrics

## PERFECT FOR

Adding to your online store  
Employee appreciation  
Sport & active industries  
Outdoor adventures  
Corporate gifting solutions

## MATERIALS

Cotton  
Nylon

*View material details on page 58  
or on [uintadesign.com/materials](http://uintadesign.com/materials)*









# UINTA DESIGN STUDIO

*Where your boldest ideas become bags.*

**From concept to custom – designed from the ground up.**

Welcome to our fully custom development path. No templates. Just possibilities.

Whether you're reimagining a past design or building something entirely new, Uinta Design Studio gives you full creative control—plus expert support at every step.

Start from scratch. Stay on budget. Stand out.

*Available for projects starting at 1,000 units.*

[uintadesign.com](http://uintadesign.com) | Connect with your Uinta rep to get started.



## IMAGINE IT

Send us your concept, goals, and any need-to-know info.



## DESIGN IT

Collaborate with our team and receive free virtuals.



## LAUNCH IT

Samples, production, global shipping.

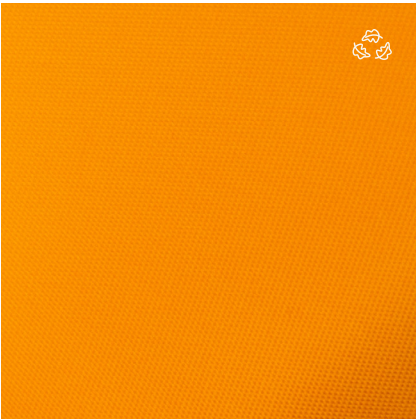


# OUR MATERIALS

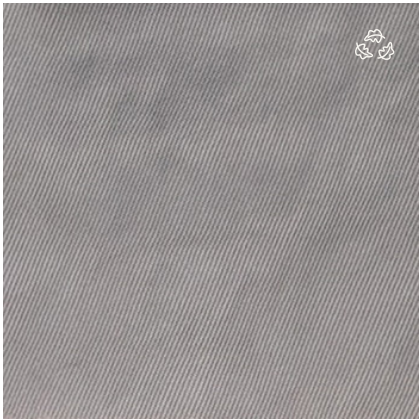
Every bag starts with the right base. We work with a wide range of tried-and-true fabrics—each with distinct performance benefits, textures, and finishes. *Don't see what you're looking for?* We can help source just about anything—and guide you to the best fit based on function, feel, and sustainability.



**Twill**  
Durable and smooth—great for structured bags.



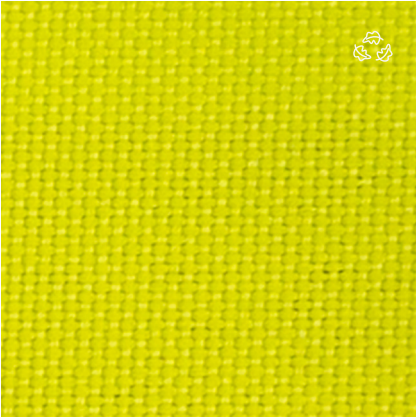
**Silk Nylon**  
Sleek and strong—ideal for stylish, lightweight bags.



**TYVEK**  
Featherlight and water-resistant—ideal for packable bags.




**600D**  
Rugged and versatile, a go-to for duffels and outdoor silhouettes.



**Coated 600D**  
An upgraded option to our 600D – water-repellent & smoother.

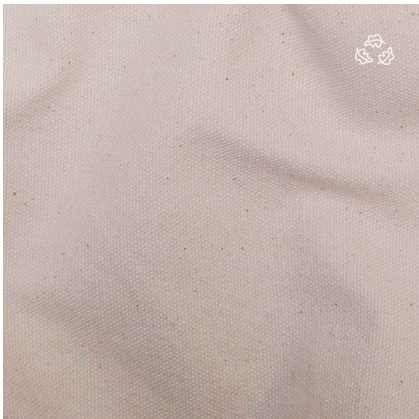


  
*If you see this symbol, the material is available in an eco-friendly or recycled option – perfect for aligning with your brand's sustainability goals.*

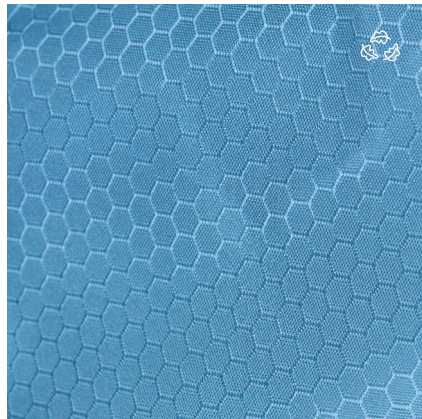
**Vinyl**  
Weatherproof and structured—commonly used for sporty bags.



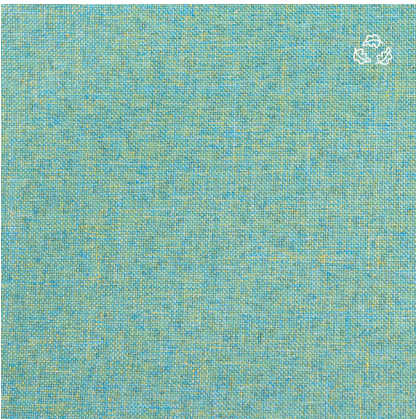
**Cotton Canvas**  
Sturdy and breathable—perfect for everyday totes and work bags.



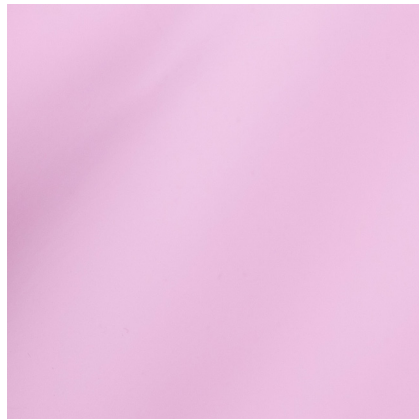
**Ripstop**  
Lightweight and tear-resistant—great for durable travel bags.



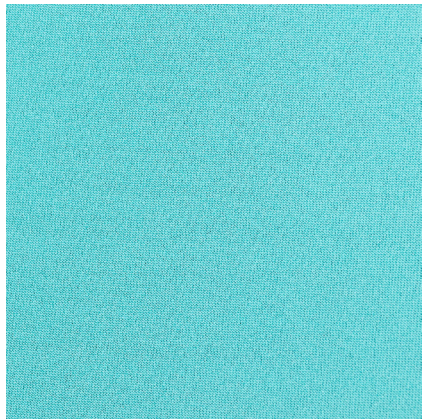
**RPET**  
Made from recycled plastic bottles—eco-forward and durable.



**Coated Nylon**  
Smooth and versatile—great for duffels, backpacks, and more.



**Neoprene**  
Flexible and cost effective—perfect for sporty, protective bags.







# ABOUT US

Uinta Design is a global product development and manufacturing partner built to bring your custom bags and accessories to life—from concept to delivery. With offices in Amsterdam, North America (Utah), and China, and manufacturing facilities in both China and Vietnam, we offer a fully integrated process that ensures speed, precision, and quality at every stage.

Founded by brothers Dan and Jake Rigby—entrepreneurs who first launched the successful bag brand Vooray—Uinta was born from a deep passion for product design. What started as a love for creating standout gear evolved into a full-scale design and production agency trusted by brands like Peloton, Chic-fil-A, HOKA, Walmart, and Adidas.







visit us at  
[uintadesign.com](http://uintadesign.com)

